



RT-LAB

What's New in RT-LAB

VERSION

2024.4

REMINDER

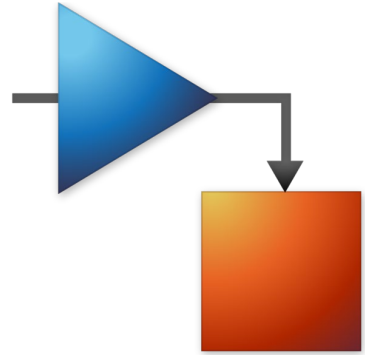
- **OPAL-RTLinux 3** is required on your simulator to **run RT-LAB 2024.4**.
- This version is **not compatible** with **Red Hat Linux 32-bit** or **CentOS 6.6 64-bit** operating systems.
- For more details on the obsolescence announcements, please refer to the following pages:

[OPAL-RT 32-BIT OS Obsolescence \(Red Hat 32-bit\)](#)
[OPAL-RT CENTOS 6.6 64-bit Obsolescence](#)

MATLAB® SUPPORT IN RT-LAB 2024.4

RT-LAB 2024.4 supports MATLAB®/Simulink® versions from R2018b and R2019b to R2021a through R2024a.

For more details about the MATLAB® support policy, please refer to the page: [RT-LAB Release Schedule & Policy](#)



PHASING OUT

Dynamic LabVIEW® Panels

With RT-LAB 2024.4, we have begun **phasing out Dynamic LabVIEW® Panels** in RT-LAB. This will be the last version that supports editing existing panels created in Dynamic LabVIEW® Panels.

No need to worry! We've got you covered with OPAL-RT Dashboards, a gradual phase-out process, and the LabVIEW API.

Read all about it here: [Notice of obsolescence for Dynamic LabVIEW® Panels in RT-LAB](#)

VERSION HIGHLIGHTS - EHS

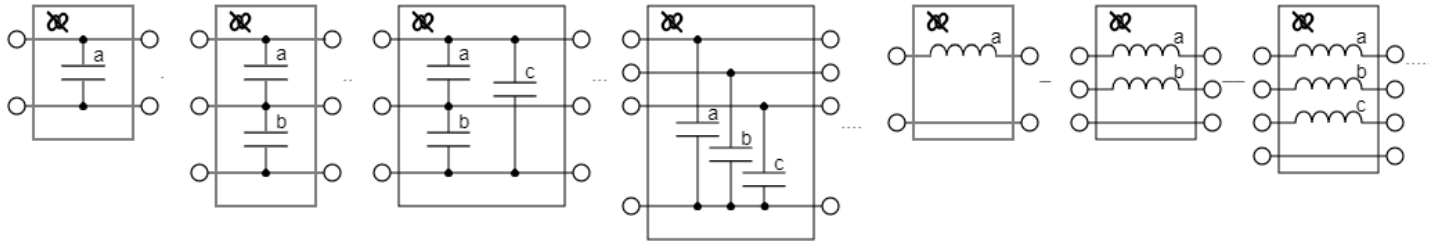
Better performance with eHS

[Read all the release notes for eHS](#)

- We have introduced a **new calculation optimization** that allows achieving **smaller time steps** for the same circuit, enhancing simulation precision and efficiency.

Decoupling block library

- Discover a **new set of inductive and capacitive blocks** designed to improve the performance of large circuit models. Read : [How-to decouple eHS Gen5 circuit to reduce minimum time step](#)



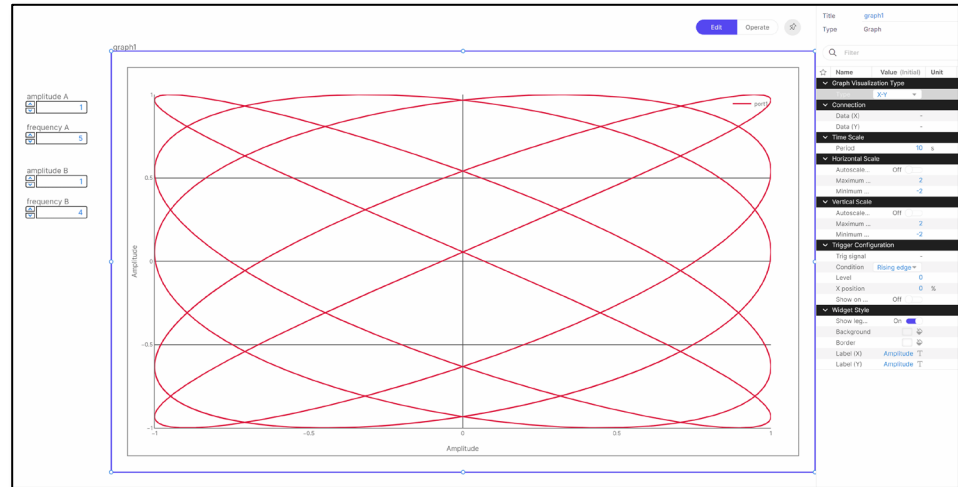
Note: Requires 'EHS_HIGH_PERFORMANCE_TOKEN' license

VERSION HIGHLIGHTS - DASHBOARD

Improvements and novelties

[Read all the release notes for DASHBOARD](#)

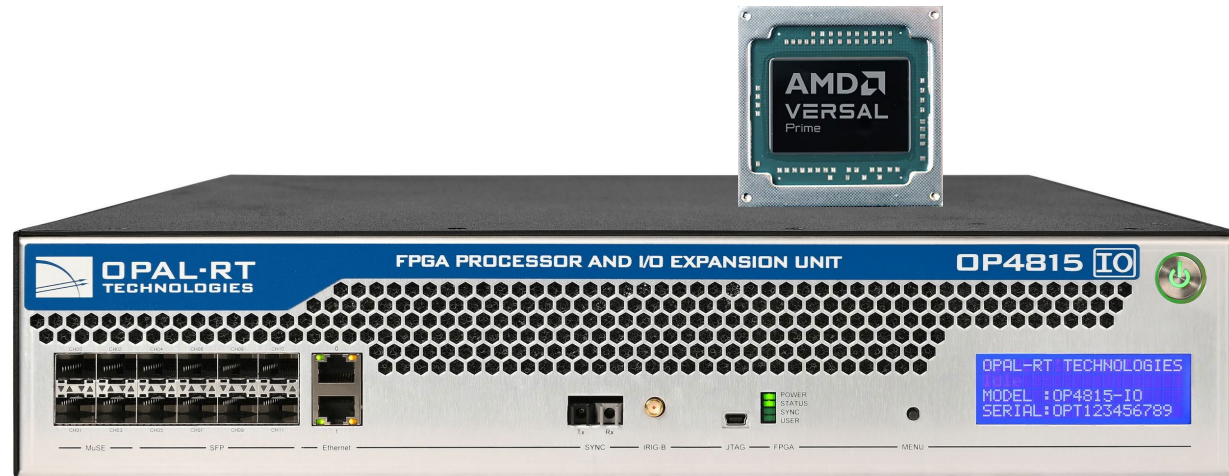
- **Panels** can now be **exported and imported** independently.
- The **Graph widget** now supports **XY Graphs** (see details below).
- **New widget shapes** and an **improved design** have been introduced.
- **Table performance** has been **significantly enhanced**, ensuring faster and more reliable data handling.



VERSION HIGHLIGHTS - MMC

[Read all the release notes for MMC](#)

- The **bitstream for the FPGA** has been added for use with the **OP4815-IO FPGA Processor and I/O Expansion Unit**.
- Updated bitstreams now include **new features** such as:
 - **Sub-module DC current injection**
 - **Individual control** of fast discharge for sub-modules in the FPGA.



ALL VERSION RELEASE NOTES

For a complete list of all new features, improvements, and fixed issues, please refer to the [RT-LAB | Release Notes 2024.4](#)

- RT-LAB
- ARTEMiS
- ePHASORSIM
- DASHBOARD
- Schematic Editor
- RT-XSG
- eHS
- MMC



RT-LAB

NEW FPGA PROCESSOR UNIT

OP4800 SERIES

FPGA Processor and I/O Expansion Units

Connectivity

Up to 140 I/O plus 12 high-speed 5 Gbps SFP multi-mode fiber-optic module connectors.

Follow this link to know more
opal-rt.com/op4800-series

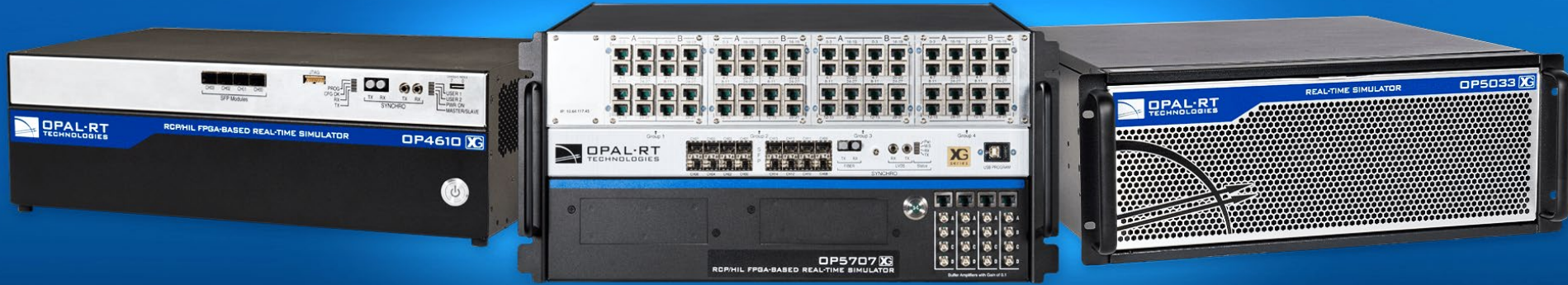


Analog Sampling
10 MSPS

Minimum Time Step
90 ns

Sampling Rate
625 ps

THE NEW XG SERIES



The New XG Series Unmatched Performance

OPAL-RT is taking real-time simulation to another level with the new XG series. Powered by the cutting-edge OPAL-RTLinux 3 operating system, Intel's latest technologies, and our unique toolboxes, this series enables engineers to achieve unmatched performance in real-time simulation.

Follow this link to discover the XG Series of real-time simulators opal-rt.com/hardware-overview

ADVANTAGE+ UPGRADE PROGRAM



UPGRADE TO XG SERIES FOR UNMATCHED PERFORMANCE

As a valued customer, we are committed to providing you with access to the **latest technologies** and **advanced capabilities**.

We are excited to introduce an **exclusive, limited-time upgrade program** designed to ensure your success.

Take advantage of this opportunity with a **substantial discount** available **exclusively for existing customers upgrading to the XG Series**.

[Click here to view the offer](#)

ONLINE USER DOCUMENTATION

Access the comprehensive online **user documentation** for all OPAL-RT products.

wiki.opal-rt.com

STAY IN TOUCH

Create an account and subscribe to **OPAL-RT communications** to stay up-to-date with the latest news, updates, and insights about RT-LAB and more.

[Register Now !](#)